

COOPER Crouse-Hinds

Ex-Cell STEEL ENCLOSURE RANGE



Cooper Crouse-Hinds are premier manufacturers of high quality and robust enclosure solutions and assemblies configured to meet the requirements of the most demanding hazardous area and industrial environmental applications. With over 30 years of experience in the design, engineering and manufacture of enclosure solutions, Cooper Crouse-Hinds provides, tried and tested solutions to meet the toughest project and installation needs.

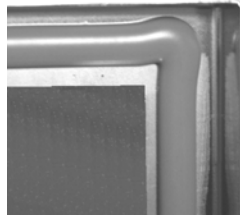
The Ex-Cell range is an "ATEX certified" heavy-duty enclosure solution fully compliant with the impact, thermal and ingress protection requirements of EN50014. These are available in a wide range of sizes to meet a diverse range of applications.

With our customizing service fittings such as cable glands, breather drains and blanking plugs can be provided and fitted as specified. Additionally appropriately certified components such instrument transmitters and field-bus modules maybe fitted to provide fully certified OEM solutions.

Using the highest quality materials and design benefits the Ex-Cell enclosure range is the industry benchmark for quality and performance enclosure solutions for both electrical and instrumentation applications.



The 1/4 turn lock or the retained stainless steel slotted hex bolt fastenings provide a rapid means of achieving high integrity ingress protection (IP) of 66 for reliable & rapid environmental protection.



The high integrity "single piece" sealing gasket for superior ingress protection (IP) of 66 and excellent recovery and re-sealing properties for continuous environmental protection.



An integral drainage channel prevents liquids or other solids contaminates from running in or falling into the enclosure when the door is opened, and to minimize gasket path contamination.



An integral external & internal feed through brass earth / ground stud assembly enables rapid and reliable protective earth / ground connection mounted on the side of the enclosure for ease of access.

Material / Finish	316L Stainless Steel (1.4404 to EN 10088) with superior "corrosion resistant" electro chemical polish. 304 (1.4301 to EN 10088) Stainless Steel with superior "corrosion resistant" electro chemical polish. Sheet Steel - Polyester powder coated to RAL 7032.
Gasket Material	High integrity "one piece" foam in place polyurethane gasket. Optional Chloroprene closed cell sponge gasket.
Door Fastening	Chromium plated Zinc 1/4 turn lock with stainless steel hinges (two latches fitted on sizes 50cm(20") high and above) (Double bit lock supplied as standard with other key options on request) Captive stainless steel bolt door fastenings available on request. (Optional factory fitted padlock hasp available on request)
Enclosure Mounting	4 x external 3mm welded lugs 11mm Ø holes / slots, vertical or horizontal.
Equipment Mountings	4 x stand off pillars 9mm Ø, 25mm high, tapped M6 x10, for rail / mounting plate.
Gland Plates	Optional 3mm thick gland plates available in bottom, top, left and right configurations.
Enclosure Earth	M10 internal / external brass earth stud assembly M6 internal stud on lid & painted gland plates.
Certified IP Rating	Certified IP66 to EN60529.
Certified Ambient Temp Range	Polyurethane foam in place gasket -20°C (-4°F) to +60°C (140°F) Chloroprene closed cell sponge gasket -40°C (-40°F) to +55°C (140°F)
Certified Impact Resistance	7 J (Nm) to EN 50014.
Certification	ATEX II 2 GD EEx e II T6. (PTB02ATEX1014) GOST-R. cULus toUL50 / C22.2 no. 94-M91, types 3S, 4X.

Enclosure / terminal assemblies configured to meet clients specification within certification parameters.
Refer to our website: www.enclosures-crouse-hinds.uk.com for further company & product information.

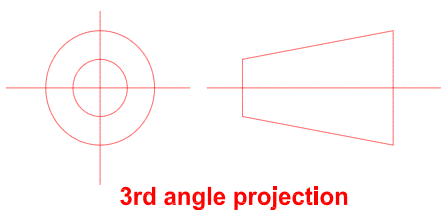
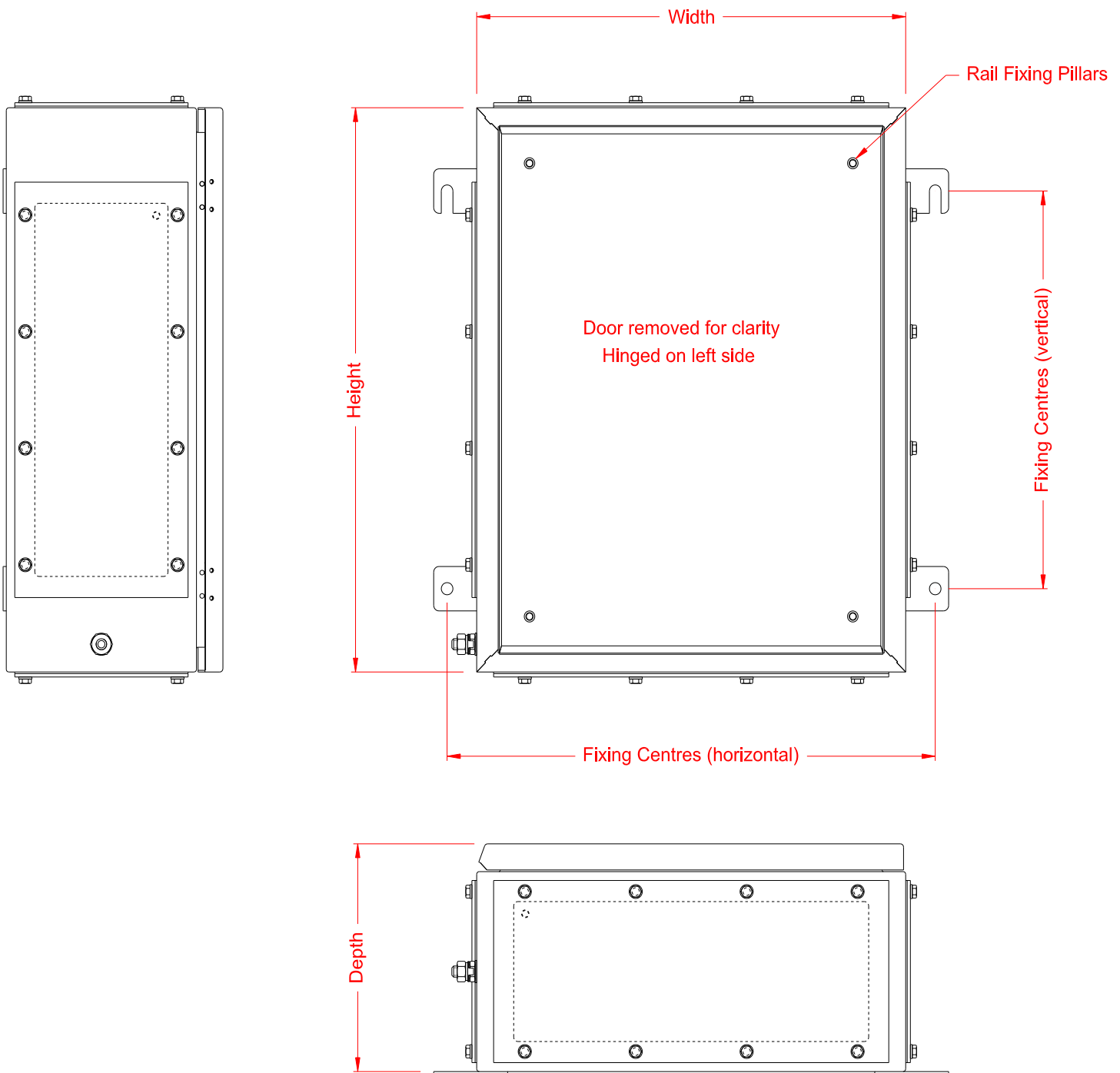
CCH PART NUMBER		XLH 231513	XLH 262615	XLH 302015	XLH 303015	XLH 403015	XLH 404015	XLH 405015	XLH 504015	XLH 505015	XLH 604015	XLH 605015	XLH 606015
DIMENSIONS OVERALL, mm	(HEIGHT X W IDTH X DEPTH)	229 x 152	260 x 260	305 x 203	305 x 305	406 x 305	406 x 406	406 x 508	508 x 406	508 x 508	610 x 406	610 x 508	610 x 610
	(Imperial Conversion)	(9" x 6" x 5")	(10.2" x 10.2" x 6")	(12" x 8" x 6")	(12" x 12" x 6")	(16" x 12" x 6")	(16" x 16" x 6")	(16" x 20" x 6")	(20" x 16" x 6")	(20" x 20" x 6")	(24" x 16" x 6")	(24" x 20" x 6")	(24" x 24" x 6")
Hoffman Range Equivalent													
"Concept" - CWS (Type 316L)		---	---	---	C-SD12126SS6	C-SD16126SS6	C-SD16166SS6	---	C-SD20166SS6	C-SD20206SS6	---	---	---
"Type 4X" - A4S (Type 316L)		---	---	---	---	A-16H1206SS6LP	A-16H1606SS6LP	A-16H2006SS6LP	A-20H1606SS6LP	A-20H2006SS6LP	---	A-24H2006SS6LP	A-24H2406SS6LP
FIXING CENTRES, mm	Vertical	152	170	203	203	267	267	267	354	354	445	445	445
	Horizontal	208	316	259	361	361	462	564	462	564	462	564	666
MATERIAL THICKNESS, mm	BODY	1.2	1.2	1.2	1.2	1.2	1.2	1.2	1.2	1.2	1.2	1.2	1.2
	DOOR	1.5	1.5	1.5	1.5	1.5	1.5	1.5	1.5	1.5	1.5	1.5	1.5
WEIGHT (empty)	kg	2.35 kg	2.8 kg	3.4 kg	4.6 kg	5.7 kg	7.1 kg	8.5 kg	8.5 kg	10.2 kg	9.9 kg	11.8 kg	13.7 kg
TERMINAL MOUNTING RAIL													
RAIL FIXING CENTRES, mm	VERT	129	160	205	205	306	306	306	408	408	510	510	510
	HORZ	52	160	103	205	205	306	408	306	408	306	408	510
RAIL LENGTH, mm	VERT	149	180	225	225	326	326	326	428	428	530	530	530
	HORZ	72	180	123	225	225	326	428	326	428	326	428	530
AVAILABLE GLANDING AREA , mm													
(with Gland Plates FITTED)	TOP & BOTTOM	108 x 58	214 x 80	156 x 80	261 x 80	261 x 80	337 x 80	464 x 80	337 x 80	464 x 80	337 x 80	464 x 80	562 x 80
	LEFT & RIGHT	108 x 58	114 x 80	156 x 80	156 x 80	261 x 80	261 x 80	261 x 80	337 x 80	337 x 80	464 x 80	464 x 80	464 x 80
MAXIMUM ENTRY GUIDE (Metric Glands)													
	M16	6	21	15	26	26	35	48	35	48	35	48	59
	M20	2	10	7	13	13	17	24	17	24	17	24	29
	M25	2	4	3	5	5	7	10	7	10	7	10	12
	M32	1	3	2	4	4	6	8	6	8	6	8	10
	M40	0	3	2	3	3	5	7	5	7	5	7	8
	M50	0	2	2	3	3	4	6	4	6	4	6	7
	M63	0	0	0	0	0	0	0	0	0	0	0	0
	M16	6	11	15	15	26	26	26	35	35	48	48	48
	M20	2	5	7	7	13	13	13	17	17	24	24	24
	M25	2	2	3	3	5	5	5	7	7	10	10	10
	M32	1	2	2	2	4	4	4	6	6	8	8	8
	M40	0	1	2	2	3	3	3	5	5	7	7	7
	M50	0	1	2	2	3	3	3	4	4	6	6	6
	M63	0	0	0	0	0	0	0	0	0	0	0	0
TERMINAL CONTENT													
	Terminal Size												
	Orientation in Enclosure												
	2.5 mm2	VERT	1 x 21	2 x 27	1 x 36	2 x 36	2 x 56	3 x 56	4 x 56	3 x 77	4 x 77	3 x 97	4 x 97
	4 mm2	VERT	1 x 17	2 x 23	1 x 30	2 x 30	2 x 47	3 x 47	4 x 47	3 x 64	4 x 64	3 x 81	4 x 81
	6 mm2	VERT	1 x 13	1 x 17	1 x 23	2 x 23	2 x 35	3 x 35	4 x 35	3 x 48	4 x 48	3 x 61	4 x 61
	10 mm2	VERT	1 x 10	1 x 13	1 x 18	2 x 18	2 x 28	3 x 28	4 x 28	3 x 38	4 x 38	3 x 49	4 x 49
	16 mm2	VERT	1 x 9	1 x 11	1 x 15	2 x 15	2 x 23	3 x 23	4 x 23	3 x 32	4 x 32	3 x 40	4 x 40

- NOTES : -
1. The information provided is based on the physical constraints of the enclosure. Please refer to the certificate for hazardous area applications.
 2. This information is for guidance purposes only. Cooper Crouse-Hinds UK Ltd reserves the right to make any necessary changes without notice

CCH PART NUMBER		XLH 303020	XLH 403020	XLH 404020	XLH 405020	XLH 504020	XLH 505020	XLH 506020	XLH 604020	XLH 605020	XLH 606020	XLH 607620	XLH 765020	XLH 766020	XLH 767620
DIMENSIONS OVERALL, mm	(HEIGHT X W IDTH X DEPTH)	306 x 306 x 203	406 x 305 x 203	406 x 406 x 203	406 x 508 x 203	508 x 406 x 203	508 x 508 x 203	508 x 610 x 203	610 x 406 x 203	610 x 508 x 203	610 x 610 x 203	610 x 762 x 203	762 x 508 x 203	762 x 610 x 203	762 x 762 x 203
	(Imperial Conversion)	(12" x 12" x 8")	(16" x 12" x 8")	(16" x 16" x 8")	(16" x 20" x 8")	(20" x 16" x 8")	(20" x 20" x 8")	(20" x 24" x 8")	(24" x 16" x 8")	(24" x 20" x 8")	(24" x 24" x 8")	(24" x 30" x 8")	(30" x 20" x 8")	(30" x 24" x 8")	(30" x 30" x 8")
Hoffman Range Equivalent		---	C-SD16128SS6	C-SD16168SS6	C-SD16208SS6	C-SD20168SS6	C-SD20208SS6	---	C-SD24168SS6	C-SD24208SS6	C-SD24248SS6	---	---	C-SD30248SS6	C-SD30308SS6
"Concept" - CWS (Type 316L)		---	A-16H1208SS6LP	---	---	A-20H1608SS6LP	A-20H2008SS6LP	A-20H2408SS6LP	A-24H1608SS6LP	A-24H2008SS6LP	A-24H2408SS6LP	A-24H3008SS6LP	A-30H2008SS6LP	A-30H2408SS6LP	A-30H3008SS6LP
"Type 4X" - A4S (Type 316L)		---	---	---	---	---	---	---	---	---	---	---	---	---	---
FIXING CENTRES, mm	Vertical	203	267	267	267	354	354	354	445	445	445	445	508	508	508
	Horizontal	361	361	462	462	462	564	666	462	564	666	818	564	666	818
MATERIAL THICKNESS, mm	BODY	1.2	1.2	1.2	1.2	1.2	1.2	1.2	1.2	1.2	1.2	1.2	1.2	1.2	1.2
	DOOR	1.5	1.5	1.5	1.5	1.5	1.5	1.5	1.5	1.5	1.5	1.5	1.5	1.5	1.5
WEIGHT (empty)	kg	5.8 kg	6.6 kg	8.1 kg	9.7 kg	9.7 kg	11.4 kg	13.2 kg	11.2 kg	13.2 kg	15.3 kg	18.3 kg	15.9 kg	18.3 kg	21.9 kg
TERMINAL MOUNTING RAIL															
RAIL FIXING CENTRES, mm	VERT	206	306	306	306	408	408	408	510	510	510	510	662	662	662
	HORZ	206	205	306	408	306	408	510	306	408	510	662	408	510	662
RAIL LENGTH, mm	VERT	226	326	326	326	428	428	428	530	530	530	530	682	682	682
	HORZ	226	225	326	428	326	428	530	326	428	530	682	428	530	682
AVAILABLE GLANDING AREA , mm															
(with Gland Plates FITTED)	TOP & BOTTOM	261 x 124	261 x 124	334 x 124	460 x 124	334 x 124	460 x 124	562 x 124	334 x 124	460 x 124	562 x 124	714 x 124	460 x 124	562 x 124	714 x 124
	LEFT & RIGHT	214 x 124 (L) 261 x 124 (R)	261 x 124	261 x 124	261 x 124	334 x 124	334 x 124	334 x 124	460 x 124	460 x 124	460 x 124	460 x 124	562 x 124	562 x 124	562 x 124
MAXIMUM ENTRY GUIDE (Metric Glands)															
	M16	34	34	44	62	44	62	78	44	62	78	100	62	78	100
	M20	18	18	26	35	26	35	44	26	35	44	56	35	44	56
	M25	15	15	21	29	21	29	36	21	29	36	47	29	36	47
TOP & BOTTOM	M32	8	8	11	15	11	15	19	11	15	19	24	15	19	24
	M40	6	6	9	13	9	13	16	9	13	16	20	13	16	20
	M50	3	3	4	5	4	5	7	4	5	7	9	5	7	9
	M63	2	2	3	4	3	4	5	3	4	5	7	4	5	7
	M16	28 (L) / 34 (R)	34	34	34	44	44	44	62	62	62	62	78	78	78
	M20	15 (L) / 18 (R)	18	18	18	26	26	26	35	35	35	35	44	44	44
LEFT / RIGHT	M25	12 (L) / 15 (R)	15	15	15	21	21	21	29	29	29	29	36	36	36
	M32	6 (L) / 8 (R)	8	8	8	11	11	11	15	15	15	19	15	19	19
	M40	5 (L) / 6 (R)	6	6	6	9	9	9	13	13	13	16	13	16	16
	M50	2 (L) / 3 (R)	3	3	3	4	4	4	5	5	5	7	5	7	7
	M63	2 (L) / 2 (R)	2	2	2	3	3	3	4	4	4	4	5	5	5
TERMINAL CONTENT															
	Terminal Size Orientation in Enclosure														
	2.5 mm2	VERT	2 x 36	2 x 56	3 x 56	4 x 56	3 x 77	4 x 77	6 x 77	3 x 97	4 x 97	6 x 97	7 x 97	4 x 128	6 x 128
	4 mm2	VERT	2 x 30	2 x 47	3 x 47	4 x 47	3 x 64	4 x 64	6 x 64	3 x 81	4 x 81	6 x 81	7 x 81	4 x 106	6 x 106
	6 mm2	VERT	2 x 23	2 x 35	3 x 35	4 x 35	3 x 48	4 x 48	6 x 48	3 x 61	4 x 61	6 x 61	7 x 61	4 x 80	6 x 80
	10 mm2	VERT	2 x 18	2 x 28	3 x 28	4 x 28	3 x 38	4 x 38	6 x 38	3 x 49	4 x 49	6 x 49	7 x 49	4 x 64	6 x 64
	16 mm2	VERT	2 x 15	2 x 23	3 x 23	4 x 23	3 x 32	4 x 32	6 x 32	3 x 40	4 x 40	6 x 40	7 x 40	4 x 53	6 x 53

- NOTES : -
- The information provided is based on the physical constraints of the enclosure. Please refer to the certificate for hazardous area applications.
 - This information is for guidance purposes only. Cooper Crouse-Hinds UK Ltd reserves the right to make any necessary changes without notice

Ex-Cell (XLH) Range Enclosure - General Arrangement



XLH Rev. 0804

Authorised Distributor:



46, Jalan SS 22/21, Damansara Jaya,
47400 Petaling Jaya,
Selangor Darul Ehsan, Malaysia.
Email: ampmech@ampmech.com
Website: www.ampmech.com