

Condulet EAJ conduit outlet boxes with covers

Cl. I, Div. 1 & 2, Groups A, B, C, D
 Cl. II, Div. 1, Groups E, F, G
 Cl. II, Div. 2, Groups F, G
 Cl. III
 NEMA 3, 4, 7ABCD, 9EFG

Explosionproof
 Dust-ignitionproof
 Raintight
 Wet Locations

3F
 3F

Applications:

EAJ conduit outlet boxes are installed in conduit systems within hazardous areas to:

- Protect conductors in threaded rigid conduit
- Act as pull and splice boxes
- Interconnect lengths of conduit
- Change conduit direction
- Provide access to conductors for maintenance and future system changes
- Act as mounting outlets for fixtures (with appropriate covers)
- Act as sealing fittings (with appropriate covers)

Features:

EAJ conduit outlet boxes have:

- Water shedding cover – suitable for wet locations when mounted in upright position
- External cover threads on body, protecting conductors from damage during pulling
- No pinching of conductors during cover installation
- Six different hub arrangements
- Taper threaded hubs to provide ground continuity
- Smooth integral hub bushing to protect conductor insulation when pulling
- Internally threaded cover openings for additional wiring room
- Flat overlapping threaded covers furnished with boxes
- Weather-resistant finish
- Internal green ground screw #10
- Four standard mounting pads (EAJB has three)

Certifications and compliances:

NEC/CEC:

- Class I, Divisions 1 & 2, Groups A, B, C, D
- Class II, Division 1, Groups E, F, G
- Class II, Division 2, Groups F, G
- Class III

UL standard:

- UL1203

CSA standard:

- C22.2 No. 30

Standard materials:

- Body – Feraloy iron alloy
- Cover – copper-free aluminum

^A Form 9 products with 5" cover opening are not suitable for Group A.

^B Available in copper-free aluminum. To order, add suffix 'SA' to end of catalog number.

^C EAJ0687 is listed for Groups C and D only.

Standard finishes:

- Feraloy iron alloy – electrogalvanized and aluminum acrylic paint
- Aluminum – natural

Options:

Description	Suffix
• Bodies – copper-free aluminum	SA
• Covers – Feraloy iron alloy.....	WOD
<i>Electrogalvanized and aluminum acrylic paint finish</i>	
• Corro-free epoxy powder coat.....	S752

Ordering information:

EAJB



Cover opening dia.	Hub size	Cat. #
3 3/16"	1/2"	EAJB16
3 3/16"	3/4"	EAJB26 ^B
3 3/16"	1"	EAJB36 ^B

EAJC



Cover opening dia.	Hub size	Cat. #
3 3/16"	1/2"	EAJC16 ^B
3 3/16"	3/4"	EAJC26 ^B
3 3/16"	1"	EAJC36 ^B

EAJD



Cover opening dia.	Hub size	Cat. #
3 3/16"	1/2"	EAJD16
3 3/16"	3/4"	EAJD26 ^B
3 3/16"	1"	EAJD36 ^B

EAJL



Cover opening dia.	Hub size	Cat. #
3 3/16"	1/2"	EAJL16 ^B
3 3/16"	3/4"	EAJL26 ^B
3 3/16"	1"	EAJL36 ^B

EAJT



Cover opening dia.	Hub size	Cat. #
3 3/16"	1/2"	EAJT16 ^B
3 3/16"	3/4"	EAJT26 ^B
3 3/16"	1"	EAJT36 ^B
5"	1 1/4"	EAJT49 ^{A, B}
5"	1 1/2"	EAJT59 ^{A, B}
5"	2"	EAJT69 ^{A, B}

EAJX



Cover opening dia.	Hub size	Cat. #
3 3/16"	1/2"	EAJX16 ^B
3 3/16"	3/4"	EAJX26 ^B
3 3/16"	1"	EAJX36 ^B

Size ranges:

- Hub – 1/2" to 2"
- Cover opening – 3 3/16" to 5" diameter

EAJ threaded covers

Flat covers



Cover opening dia.	Cat. #
3 3/16"	EAJ06
5"	EAJ09

Dome covers



Cover opening dia.	Depth	Cat. #
3 3/16"	2"	EAJ0612

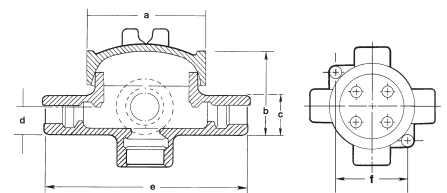
Fixture covers

Union hub type



Cover opening dia.	Fixt. stem size	Cat. #
3 3/16"	3/4"	EAJ0687 ^C

Dimensions (in inches):



Cat. #	a	b	c	d	e	f
16	3 3/4	2 11/32	1 1/2	3/4	5 9/16	3 3/32
26	3 3/4	2 25/32	1 3/4	7/8	5 9/16	3 3/32
36	3 3/4	2 25/32	1 3/4	7/8	5 9/16	3 3/32
49	5 3/4	4 1/16	2 1/16	1 3/32	7 7/16	4 3/4
59	5 3/4	4 1/16	3	1 1/2	7 13/16	4 3/4
69	5 3/4	4 1/16	3	1 1/2	7 13/16	4 3/4

Condulet EAJ conduit outlet boxes

Factory installed terminal block ordering guide

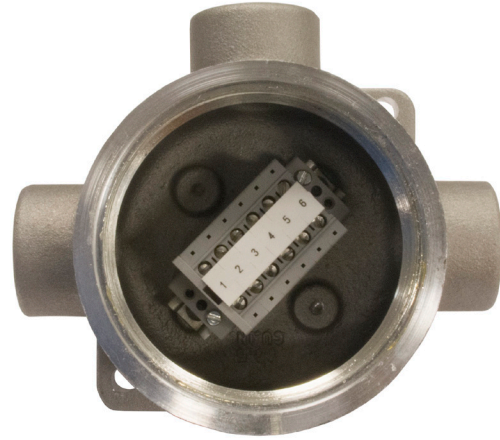
Ordering information:

DIN rail mounted terminal blocks

Electrical specifications:

30A, 150V, AWG 26-10

Cat. #	Description
DIN12	DIN rail mounted, 2 terminal blocks EAJ (shapes X, C, L, T) Form 6 & 9 cover diameter openings
DIN13	DIN rail mounted, 3 terminal blocks EAJ (shapes X, C, L, T) Form 6 & 9 cover diameter openings
DIN14	DIN rail mounted, 4 terminal blocks EAJ (shapes X, C, L, T) Form 6 & 9 cover diameter openings
DIN16	DIN rail mounted, 6 terminal blocks EAJ (shapes X, C, L, T) Form 6 & 9 cover diameter opening
DIN18	DIN rail mounted, 8 terminal blocks EAJ (shape T) Form 9 cover diameter opening
DIN112	DIN rail mounted, 12 terminal blocks EAJ (shape T) Form 9 cover diameter opening

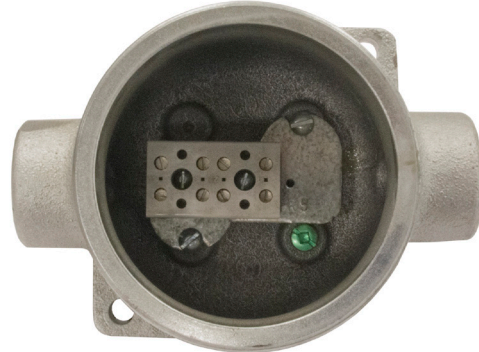


Direct mounted terminal blocks

Electrical specifications:

30A, 300V, AWG 26-10

Cat. #	Description
TB14	Direct mounted terminal block, 4 terminal blocks EAJ (shapes X, C, L, T) Form 6 & 9 cover diameter openings
TB16	Direct mounted terminal block, 6 terminal blocks EAJ (shapes X, C, L, T) Form 6 & 9 cover diameter openings
TB18	Direct mounted terminal block, 8 terminal blocks EAJ (shape T) Form 9 cover diameter opening
TB112	Direct mounted terminal block, 12 terminal blocks EAJ (shape T) Form 9 cover diameter opening



Authorised Distributor:

 **AMPMECH**

46, Jalan SS 22/21, Damansara Jaya,
47400 Petaling Jaya,
Selangor Darul Ehsan, Malaysia.

Email: ampmech@ampmech.com

Website: www.ampmech.com