

# GFS ground fault circuit interrupter

Cl. I, Div. 1 & 2, Groups C, D  
Cl. II, Div. 1, Groups E, F, G  
Cl. II, Div. 2, Groups F, G  
Cl. III  
NEMA 3, 7CD, 9EFG, 12

Explosionproof  
Dust-ignitionproof

2P

## Applications:

GFS ground fault circuit interrupters are used:

- With portable electrical equipment, such as tools, lighting systems, compressors and similar devices for personnel protection
- In areas made hazardous by the presence of flammable vapors, gases or combustible dusts
- In branch circuits of 15 to 20 amperes at 125 volts AC
- In conjunction with ENR or CPS152 receptacles

## Features:

- Factory sealed chamber encloses the ground fault circuit interrupter (GFCI) and its potentially arcing components in an enclosure with explosionproof ground joints; no additional sealing is required when proper body is used
- GFCI protects personnel against possible injury due to unwanted ground faults; meets requirements for personnel protection as defined in the National Electrical Code
- GFCI is through feed type to serve several receptacles
- Decentralized GFCI protection on branch circuits permits immediate identification of circuit where a ground fault is occurring; does not interrupt power on total branch circuit if tripped or when periodically tested; significantly reduces incidence of nuisance tripping; provides for use of 125 VAC portable lighting even when working on metal floors or catwalks
- Field installation is accomplished with standard tools
- Can be installed on any Eaton's Crouse-Hinds series single- or multi-gang EDS or EDSC device box

## Certifications and compliances:

### NEC/CEC:

- Class I, Divisions 1 & 2, Groups C, D
- Class II, Division 1, Groups E, F, G
- Class II, Division 2, Groups F, G
- Class III

### ANSI/UL standards:

- UL943, UL1203

### NEMA/EEMAC:

- NEMA/EEMAC 3, 7CD, 9EFG, 12

### CSA standard:

- C22.2 Nos. 30, 144



## Application recommendations:

- GFS1 can be installed in an EDS back box (see Section 4C) for point-of-use protection or for protection of downstream receptacles



GFS1 with EDS271 back box

- GFS1 can be used with ENR or CPS receptacles and EDS back box for circuit interrupter protection of portable equipment



GFS1 with EDS172 back box and ENR5201 receptacle

## Standard materials:

- Cover – sand cast copper-free aluminum
- Sealing well – die cast copper-free aluminum
- Pushbuttons and guards – stainless steel
- Shaft seals – neoprene
- Interior – body: polycarbonate; contacts: brass

## Standard finishes:

- Copper-free aluminum – aluminum lacquer
- Stainless steel – natural
- Polycarbonate – natural (ivory)
- Brass – natural

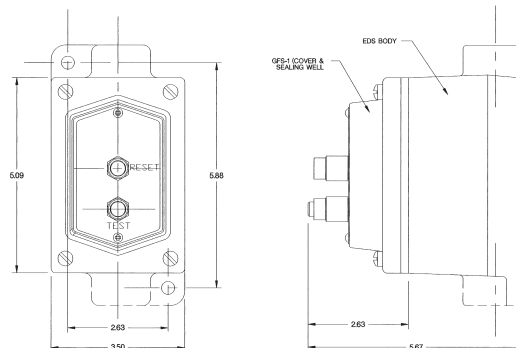
## Electrical ratings:

- 20 amperes, 125 VAC
- 5 milliamperes trip setting
- Class A per ANSI/UL943

## Ordering information:

Amps	Description	Cat. #
20	Factory sealed ground fault circuit interrupter, 5 milliamperes trip	GFS1

## Dimensions (in inches):



## Authorized Distributor:

**AMPMECH**

46, Jalan SS 22/21, Damansara Jaya,  
47400 Petaling Jaya,  
Selangor Darul Ehsan, Malaysia.

Email: [ampmech@ampmech.com](mailto:ampmech@ampmech.com)  
Website: [www.ampmech.com](http://www.ampmech.com)