



EFS 72



EFS A/A/V



EFS A



EFS D

Technical data

Ex-d control stations type EFS

Marking accd. to 2014/34/EU	⊕ II 2 G Ex d IIC T6 / ⊕ II 2 D IP67 T 85 °C
EC-Type Examination Certificate	LOM 03 ATEX 2034
IECEX Certificate of Conformity	IECEX BKI 07.0027
Marking accd. to IECEx	Ex d IIC T6 Ex tD A21 IP67 T80 °C
Permissible ambient temperature	-20 °C up to +55 °C
Rated voltage	max. 660 V AC
Rated current	max. 20 A
PE Connecting terminals	2 x 2.5 mm ² / PE ext.: 2 x 6 mm ²
Protection class	I
Incandescent lamp	230 V 3 W
Degree of protection accd. to EN 60529	IP67
Cable glands/Gland plates/Enclosure drilling	2 x 3/4" drilling, one plugged
Enclosure material	light alloy
Enclosure colour	natural finish
Other versions available on request	

Ordering details

Type	Content	Weight	Order No.
Control units			
EFS A	1 x pushbutton, 1 NO + 1 NC, label „white“	0.75 kg	NOR 000 114 110 511
EFS A/A	2 x pushbutton, 1 NO + 1 NC, label „I - 0“	0.85 kg	NOR 000 114 110 553
EFS D	1 x mushroom-head pushbutton, 1 NO + 1 NC, label „0“	0.80 kg	NOR 000 114 110 587
EFS A/D	1 x pushbutton 1 NO, 1 x mushroom-head pushbutton NC, label „I - 0“	0.85 kg	NOR 000 114 110 540
EFS L	1 x alarm pushbutton, 1 NO + 1 NC, with window	0.85 kg	NOR 000 114 110 595
EFS A/A/A	3 x pushbutton, 1 NO + 1 NC, label „0 - I - II“	1.50 kg	NOR 000 114 110 747
EFS A/A/V	2 x pushbutton, 1 NO + 1 NC, label „0 - I - II“, 1 x green signal lamp	1.50 kg	NOR 000 114 110 748
EFS 72	for measuring instrument AM 72 (72 mm x 72 mm), not part of the delivery	1.20 kg	NOR 000 114 110 740

Control switches

EFS I	0 - 1		0.90 kg	NOR 000 003 110 945
EFS H	1 - 2		0.90 kg	NOR 000 003 110 937
EFS J	1 - 0 - 2		0.90 kg	NOR 000 003 110 953
EFS P	0 - 1		0.90 kg	NOR 000 003 110 995
EFS P40	0 - 1		0.90 kg	NOR 000 114 110 738

Ex-d control stations



EFS 72



EFS A/A/V

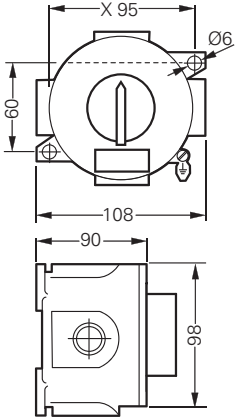


EFS A



EFS D

4 Dimension drawing



EVS...

X = fixing dimensions

Authorised Distributor:



46, Jalan SS 22/21, Damansara Jaya,
47400 Petaling Jaya,
Selangor Darul Ehsan, Malaysia.
Email: ampmech@ampmech.com
Website: www.ampmech.com