

# CLEANABILITY MATTERS

## Uni-San® Hygienic Sight Windows

*UniGlas® and Uni-San® Windows – More than 40 Years of unparalleled success in the toughest, most challenging services*

### SEE YOUR PROCESSES WITH REASSURANCE OF...

- One-piece design
- Crevice free transition
- Proven, traceable materials

### SEE PROCESS ANYWHERE

- Clamp to any Hygienic clamp connection
- Turn any ferrule (on a tank, or in a line) into a viewing window or light port

### MAXIMIZE PRODUCTION

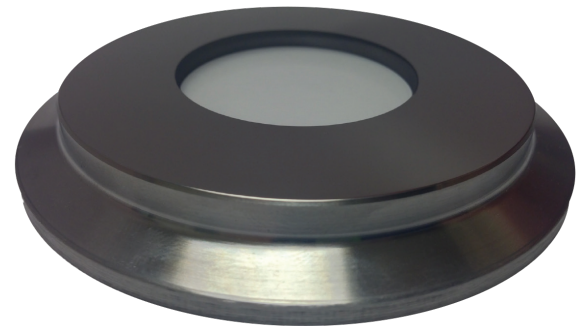
- Shorten cleaning cycles and prevent product loss
- Surpass your CIP & SIP requirements
- If required, may be mechanically cleaned and placed back in service
- Validate system performance

### HIGHEST RATINGS

- Highest safety factor versus system design pressure
- Pressure Ratings up to 360 psig (25 Bar)
- Temperature ratings up to 536 F (280 C) and down to -22 F (-30 C) Duplex and 572 F (300 C) to -76 F (-60 C) Hastelloy®

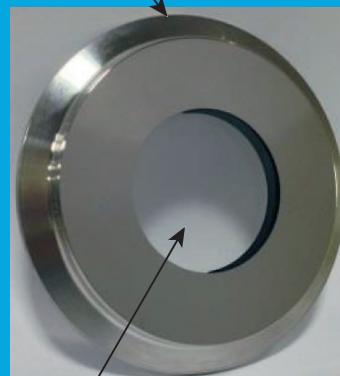


UNI-SAN®  
with LED Illuminator



JACOBY-TARBOX®  
UNI-SAN®

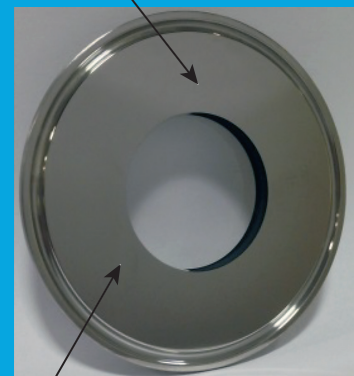
Hygienic Clamp Connections  
According to ASME-BPE



FRONT (Atmosphere)

Type 1  
Borosilicate Glass

10Ra  $\mu\text{in}$  (.25Ra  $\mu\text{m}$ ) Mechanical  
wetted surface finish  
Note: Electropolish available



BACK (Process)

Duplex SS (Standard)  
Note: Other materials available

**JACOBY-TARBOX®**  
HYGIENICS™

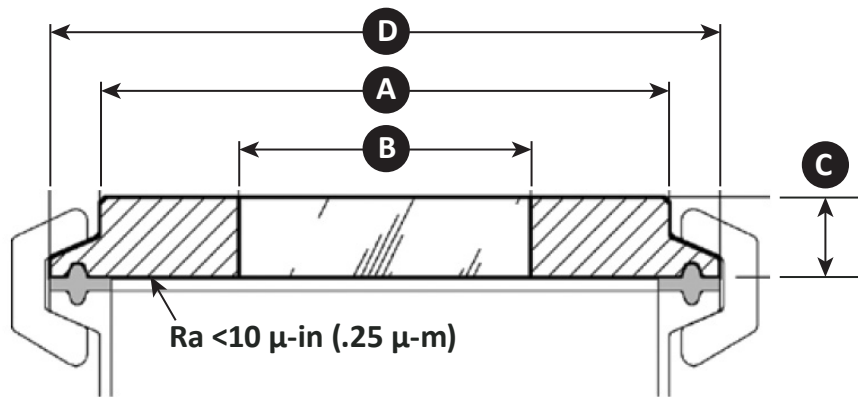
# Specify Your Uni-San® Hygienic Sight Windows

| Model         | Size | Wetted Metal | Surface Finish |
|---------------|------|--------------|----------------|
| <b>UNISAN</b> |      |              |                |

| SIZE        | CODE | SIZE | CODE |
|-------------|------|------|------|
| 1/2" & 3/4" | 34   | 4"   | 4    |
| 1" & 1-1/2" | 15   | 6"   | 6    |
| 2"          | 2    | 8"   | 8    |
| 2-1/2"      | 25   | 10"  | 10   |
| 3"          | 3    | 12"  | 12   |

| RING             | CODE |
|------------------|------|
| Duplex SS (2205) | SS   |
| Hastelloy® C22   | HC   |

| HEAD SURFACE FINISH | CODE |
|---------------------|------|
| 10 Ra (Mechanical)  | [ ]  |
| Electropolished     | EP   |



| Size*<br>Tube OD | A    |      | B (VIEW) |     | C (THICK) |    | D (OD) |        | WEIGHT |      | MAX PRESSURE |      |
|------------------|------|------|----------|-----|-----------|----|--------|--------|--------|------|--------------|------|
|                  | IN   | mm   | IN       | mm  | IN        | mm | IN     | mm     | Lb     | Kg   | psi          | Bar  |
| 1/2" & 3/4"      | 0.7  | 18   | 0.4      | 10  | 0.4       | 10 | 0.984  | 25.00  | 0.33   | 0.15 | 360          | 24.8 |
| 1" & 1-1/2"      | 1.6  | 41   | 1.0      | 25  | 0.4       | 10 | 1.984  | 50.39  | 0.40   | 0.18 | 230          | 15.9 |
| 2"               | 2.0  | 52   | 1.2      | 30  | 0.4       | 10 | 2.516  | 63.91  | 0.47   | 0.21 | 230          | 15.9 |
| 2-1/2"           | 2.5  | 63.5 | 1.4      | 35  | 0.4       | 10 | 3.047  | 77.39  | 0.58   | 0.26 | 230          | 15.9 |
| 3"               | 3.0  | 76   | 1.8      | 45  | 0.4       | 10 | 3.579  | 90.91  | 0.82   | 0.37 | 150          | 10.3 |
| 4"               | 4.0  | 101  | 2.2      | 55  | 0.5       | 12 | 4.682  | 118.92 | 1.09   | 0.49 | 150          | 10.3 |
| 6"               | 6.0  | 152  | 3.0      | 75  | 0.6       | 16 | 6.570  | 166.88 | 1.19   | 0.54 | 85           | 5.9  |
| 8"               | 7.8  | 198  | 3.9      | 100 | 0.7       | 18 | 8.563  | 217.50 | 1.62   | 0.74 | 85           | 5.9  |
| 10"              | 9.6  | 245  | 5.1      | 130 | 0.8       | 20 | 10.551 | 268.00 | 2.52   | 1.14 | 85           | 5.9  |
| 12"              | 11.8 | 300  | 5.9      | 150 | 0.9       | 22 | 12.571 | 319.30 | 1.44   | 3.18 | 85           | 5.9  |

\*Hygienic clamp dimensions are in accordance with ASME-BPE, shown in inches

CLA851 Bulletin: T100.65 (09/22)

Authorised Distributor:

**AMPMECH**

46, Jalan SS 22/21, Damansara Jaya,  
47400 Petaling Jaya,  
Selangor Darul Ehsan, Malaysia.

Email: [ampmech@ampmech.com](mailto:ampmech@ampmech.com)  
Website: [www.ampmech.com](http://www.ampmech.com)

**JACOBY-TARBOX®**  
HYGIENICS™