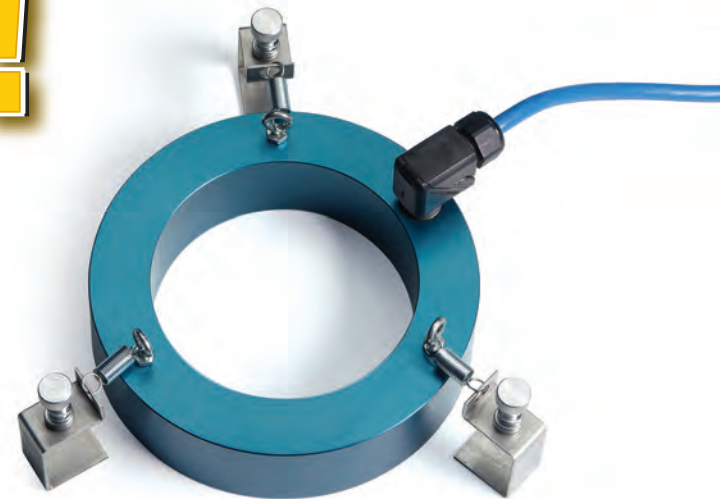


Simply Brilliant!

See the Video!

2 minute demonstration at jacoby-tarbox.com/lighting



Double the brilliance by simply placing a 4" Phaeton XTL inside a 6" Phaeton XTL.



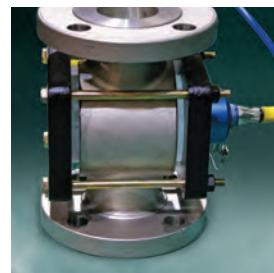
Simple installation. The Phaeton XTL clips on in two minutes or less.



Cool operation eliminates "baked-on" product blocking the window.



Illuminate units as small as 1/4" with the Phaeton SL.



JACOBY-TARBOX®
A PRODUCT OF CLARK-RELIANCE

Authorised Distributor:



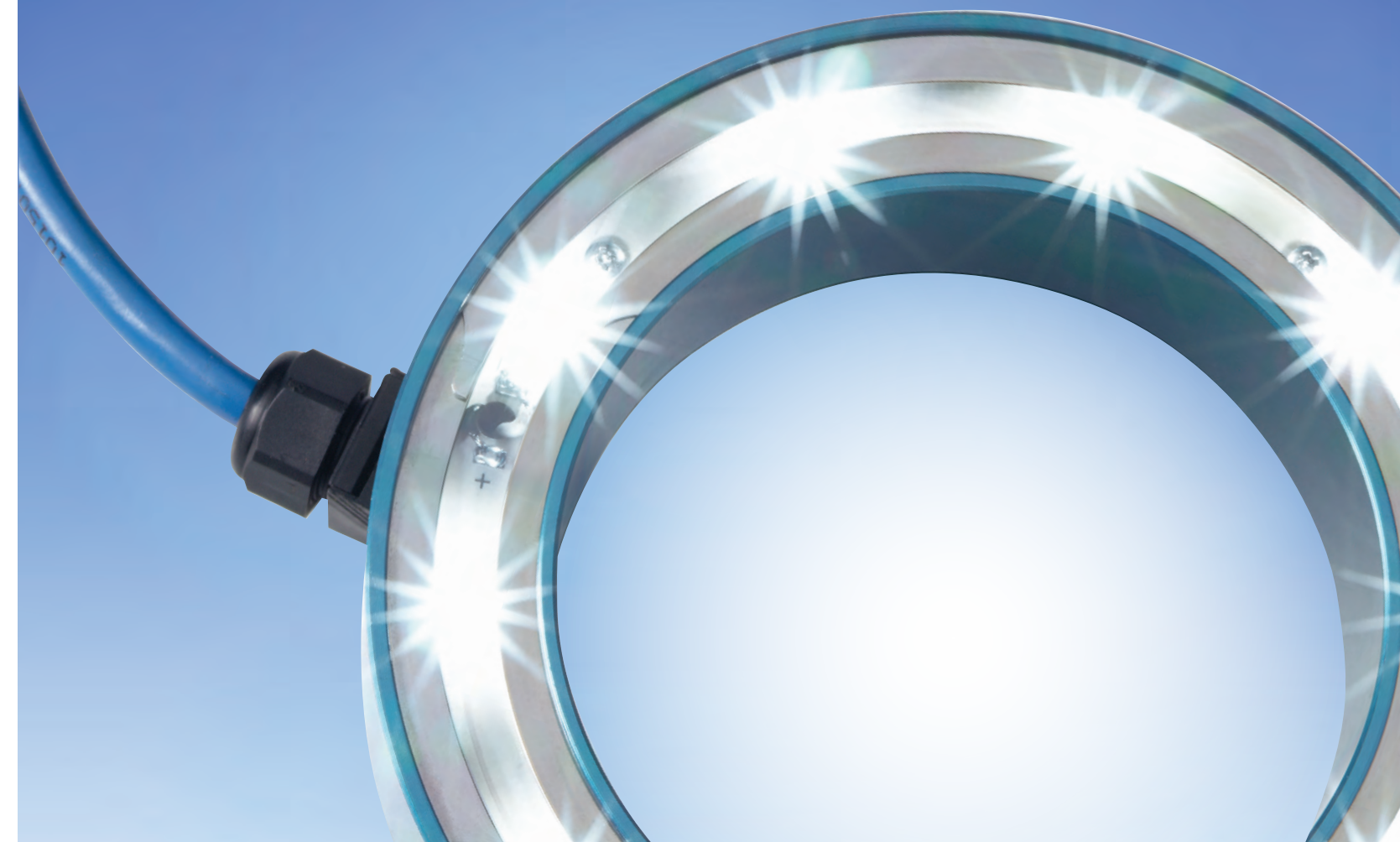
46, Jalan SS 22/21, Damansara Jaya,
47400 Petaling Jaya,
Selangor Darul Ehsan, Malaysia.
Email: ampmech@ampmech.com
Website: www.ampmech.com

Bulletin: T100.112
Date: 7/2021
CLA-361

Phaeton® LED Explosion Proof Process Lighting

*for Tanks, Vessels, Sight Flow Indicators
and OEM Equipment*

JACOBY-TARBOX®
A PRODUCT OF CLARK-RELIANCE



Simply Brilliant! 33X Brighter

See the video! 2 minute demonstration: jacobytarbox.com/lighting

SIMPLY

Tank and sight flow indicator lighting has never been simpler. Using the latest LED technology, Phaeton XTL Tank Lights & Phaeton SL Sight Flow Indicator Lights:

- Are rated for over 10 years continuous duty... no need to turn on and off
- Consume less than one amp...so they stay cool enough to touch even when on
- Illuminate with cool light, keeping product from baking on the window
- Require no maintenance. Need to clean it? Unclip and wash...no need to disconnect
- Install or retrofit in 2 minutes or less on any tank window 4" (100mm) and larger (for view thru) or any sight flow indicator 1/4" (6mm) and larger



Intrinsically Safe LED Tank Lights
XTL Series

BRILLIANT

LED tank lights and sight flow indicator lighting have never been brighter:

- 33x brighter than the first generation product
- Uses 1/20 the power of a 100 watt bulb, without the heat
- Minimizes reflective light...mounts directly against the window
- XTL available in 4" (100mm) and 6" (150mm) sizes
- SL is 2" (50mm) and fits 1/4" (6mm) thru 3" (80mm) units
- For the ultimate in brilliance, a 4" XTL model can "nest" inside of a 6" XTL unit to DOUBLE the brightness!



View-thru simplicity! Because you look through the Phaeton XTL Series light, there is no need for a second window...one is all that's needed for both illumination and viewing.

Phaeton® Explosion Proof Lights

XTL

USA/CANADA APPROVALS:
CLASS I, DIVISION 1, GROUPS B,C,D T4 Ta=122°F (50°C)
CLASS II, DIVISION 1, GROUPS E,F,G T4 Ta=122°F (50°C)



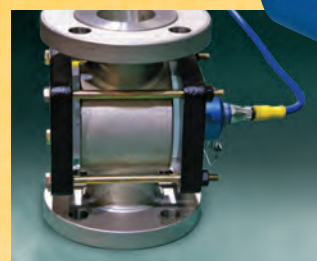
- Intrinsically safe output (Shielded cable)
- NEMA 4X rating (Anodized Aluminum Housing, 316SS optional)

SL Only

USA/CANADA APPROVALS:
CLASS I, DIVISION 1, GROUPS B,C,D T4
CLASS I, ZONE 1, AEx db [ib] IIB+H2 T4 Gb (POWER SUPPLY)
CLASS I, ZONE 1, AEx ib IIB+H2 T4 Gb (LIGHT)
Ex db [ib] IIB+H2 T4 Gb (POWER SUPPLY)
Ex ib IIB+H2 T4 Gb (LIGHT)
-40°F (-40°C) ≤ Ta ≤ 140°F (60°C)

ATEX APPROVALS:
II 2(2) Ex db [ib] IIB+H2 T4 Gb (POWER SUPPLY)
II 2 G Ex ib IIB+H2 T4 Gb (LIGHT)
-40°F (-40°C) ≤ Ta ≤ 140°F (60°C)

IECEX:
Ex db [ib] IIB+H2 T4 Gb (POWER SUPPLY)
Ex ib IIB+H2 T4 Gb (LIGHT)
-40°F (-40°C) ≤ Ta ≤ 140°F (60°C)



Intrinsically Safe LED Sight Flow Indicator Lights
SL Series

