

Technical data

Connection DN	15 - 50
Connection G	1/2 - 2
Nominal pressure PN	16
Temperature	130 °C
Medium	liquids, gases and steam

Description

Sight glasses without flow indicator may be used for easy checking of fill levels, consistency, bi- or multiphase flows or condensate. They may also be used for mixtures of liquids, gases and vapours. Flow indicators fitted with a vane can be used for monitoring the flow of liquids, gases and biphasic fluids. Flow indicators fitted with an impeller are used for liquids and small flow volumes.

Body and cover are connected by a clamp ring and two bolts. Servicing/ maintenance is easy and does not call for special tooling.

Standard

- » 1 borosilicate glass
- » All stainless steel construction
- » Quick-release body clamp ring
- » - without internal parts for easy visual inspection
installation position: any

Options

- » With internal indicator flag, line scale 1 - 10, for constant flow direction, horizontal or vertical installation, sizes G 1/2 - 1 or DN 15 - 25 are supplied without return spring; they can be supplied with return spring as an option; return springs can be fitted retrospectively. All other sizes are fitted with return springs as standard equipment.
Installation position:
 - with spring in any position
 - without spring horizontal only if pointer points downward, vertical only if flow is upward
- » With impeller for constant flow direction
Temperature max. 80 °C
Installation position:
 - horizontal or vertical, for small flow rates ($v < 1$ m/s)
- » different materials for diaphragm and seals, suitable for your medium
- » Special connections: Aseptic, ANSI or JIS flanges, welding ends, other connections on request
- » Special versions on request

Product



Picture similar

Technical specification

Sensitivity [m³/h]

option	nominal diameter					
	G 1/2	G 3/4	G 1	G 1 1/4	G 1 1/2	G 2
	DN 15	DN 20	DN 25	DN 32	DN 40	DN 50
indicator flag	0.2	0.25	0.3	1.8	1.8	2.3
impeller	0.15	0.4	0.5	0.5	0.6	1

sensitivity for water, 20°C, horizontal installation

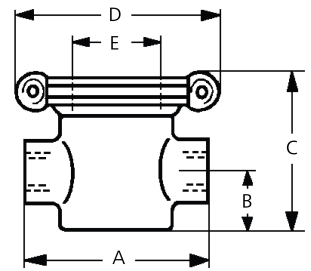
Materials

Materials	
Body	stainless steel 1.4404 / 316L
Seal	EPDM / Nova Universal
Glass	borosilicate glass
Internals (optional)	indicator flag stainless steel 1.4404 / 316L impeller PBTP
Cover fastening	profile clamp made of stainless steel, G 2 and DN 50 with screws

Dimensions and weights

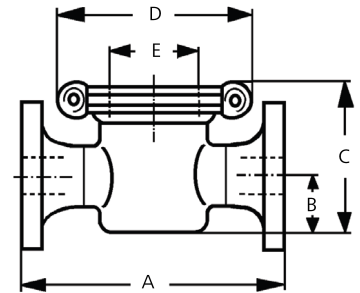
Dimensions [mm]						
size	Connection G					
	1/2	3/4	1	1 1/4	1 1/2	2
A*	100	100	140	192	190	225
B	25	25	25	25	25	50
C	75	75	75	75	75	150
D	140	140	140	140	140	135
øE	65	65	65	65	65	90

sleeve



Dimensions [mm]						
size	nominal diameter DN					
	15	20	25	32	40	50
A*	170	180	215	220	226	230
B	25	25	25	25	25	50
C	75	75	75	75	150	150
D	140	140	140	140	135	135
øE	65	65	65	65	90	90

flange



*overall length tolerances in acc. with DIN EN 558

Weights [kg]						
Connection G			nominal diameter DN			
1/2	3/4	1	1 1/4	1 1/2	2	2
			15	20	25	32
	0.8		1.1	1.8	2.3	3
			3	3.3	4.5	4.9
					5.8	

Customs tariff number	
84818099	

Mankenberg GmbH | Spenglerstrasse 99 | D-23556 Luebeck | Germany

Authorised Distributor:



46, Jalan SS 22/21, Damansara Jaya,
47400 Petaling Jaya,
Selangor Darul Ehsan, Malaysia.

Email: ampmech@ampmech.com
Website: www.ampmech.com

Please send us your enquiry and allow us to advise you. Special designs on request.
The pressure has always been indicated as overpressure. Mankenberg reserves the right to alter technical specifications without notice.