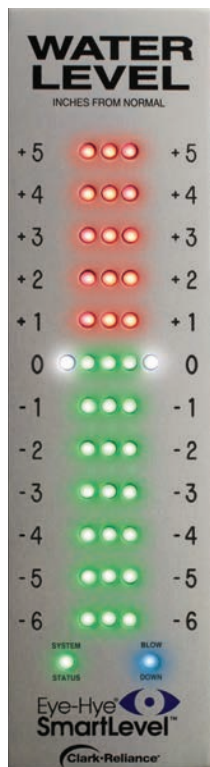


Reliance®

A PRODUCT OF CLARK-RELIANCE

Boiler Instrumentation





Reliance Boiler Instrumentation

Designing and manufacturing boiler level control systems since 1884, Clark-Reliance has become the most recognized and trusted name in boiler-trim controls and operation. That position has been accomplished by the continued commitment to excellence in quality product performance and customer service. These values are core competencies at Clark-Reliance.

From introducing the first alarm water column to the new Eye-Hye® SmartLevel™ Boiler Level Indication System, Clark-Reliance continues to lead the industry in boiler control safety, performance, and new product development. These innovations are also available to modernize your existing level control systems, and improve reliability.



Complete product details available on our website:

- *Product Bulletins*
- *Instruction Manuals*
- *Helpful Maintenance Videos*

www.relianceboilertrim.com



Introduced conductivity probe technology to the Boiler Industry in 1959

Industry leader with Drum Level instrumentation specified by major contractors, OEM's and users

Complete line of products to 3000 PSI (200 Bar)

Over 125 years of manufacturing experience

Knowledge, Corporate Stability, Quality Service

Active Member of



Reliance®
A PRODUCT OF CLARK-RELiance

Leading the industry with the most complete line of innovative products and solutions.



Certifications

Clark-Reliance® designs and develops product specifications consistent with the customer's use for that product, and ensures that all products and services conform to their established quality specifications.

Water Columns & Gage Glasses



Steel Water Column with Probes and Flat Glass Gage



Direct-to-Drum Assembly with Flat Glass Gage and DuraStar Illuminator



Direct-to-Drum Assembly with Simpliport® 180 Water Gage System

■ Water Columns to 3000 PSI (200 Bar)

- High & Low Level Alarms
- Low Water Cutouts
- Conductivity Probes
- Retropak Conversion Kits [Float to Probe – up to 900 PSI (60 Bar)]

■ Direct-to-Drum Assemblies

Water Gage Glasses



Prismatic (Reflex) Water Gage



Simpliport 180° Water Gage System with LED illuminator

“I’ve never seen a gage that you can see so well from extreme angles. With this sight glass, I’m standing anywhere within 180° of it, the level is visible.”

— Maintenance, Municipal Power Plant

■ Simpliport® 180 Water Gage System with LED illuminator and Wide Angle Viewing Hood

- Available models for ordinary and classified areas
- Optional Sun Shade

■ Water Gage Glasses

- Prismatic (Reflex Type) to 350 PSI (23 Bar)
- Flat Glass (Transparent) to 2000 PSI (133 Bar)
- Simpliport (Bi-Color) to 3000 PSI (200 Bar)

■ Isolation Valves (Bronze or Steel)

■ DuraStar Illuminators

- High Contrast Superior Visibility Day or Night
- Maintenance Free
- Field Upgradeable
- Long-Life – 100,000 hour
- No Heat Generation
- Continuous or “On-Demand” Level Indication
- Amber LEDs for high intensity “star-like” image for the water line
- Longest Field-of-View



Flat Glass Water Gage



Flat Glass Water Gage with DuraStar Illuminator

Columns and Probes



Electrolev
Columns

FSB Type Probe
for Pressures up to
3000 PSI (200 Bar)



■ Accurate, Dependable, Reliable Water Level Indication

- New Intelligence “Senses the Sensors” to notify operators when the probes need attention
- Eliminates the need for frequent blowdowns
- Reduces operator exposure to hazardous areas
- Increases probe life
- Pressures to 3000 PSI (200 Bar)
- Seven probe models are available with pressures up to 3000 PSI

Control Units



SC Series
Control Unit

- Blowdown Indication
- Alarm & Trip Switches
- Programmable Logic Functions and Time Delay
- Trusted Level Indication
- Maximize Level Accuracy
- Available models for ordinary and classified areas

■ Operation and Performance

- Eye-Hye Systems are manufactured to meet ASME boiler code (Section 1) requirements
- Over 10,000 in operation worldwide
- 50 years of unmatched safety

“We are very satisfied with Clark-Reliance products. They work well, last long and have great support.”

— *Midwestern USA Power Plant*

Local and Remote Indicators



SIM Indicator in Control Room



- Blowdown Indication
- Highlighted Normal Water Level for Quick Reference
- 180° viewing
- Triple redundant LEDs

Remote indicators can be located up to one mile from the control unit

Low Water Cutouts (Primary or Auxiliary)

Float Type

Levalarm® GOLD



- 3 models up to 1000 PSI (69 Bar)
- Tri-Magnet Switch eliminates effects from vibration
- Dependable vertical float action

Probe Type

EA101 Series Levalarm®



- Conductivity Probe Models to 1800 PSI (120 Bar)
- Reliance® relay control unit required

TWIP®



TWIP Column

■ TWIP® (Turbine Water Induction Protection) – Level Switches

- Heater Application
- Drip Legs
- Deaerators
- Condensate Tanks
- Drain Pots



SureStart™ Operator Assistance Program:

Our Expert. Your Plant. Proven Effective. On Site or Virtually.

We'll help assure that your next boiler project gets up and running smoothly.

Qualified purchasers of boiler control systems made by us are entitled to an all-day on-site review by a direct factory expert from Clark-Reliance.

We'll Verify the Installation

Any discrepancy between what we specified as proper installation and what we observe will be immediately reported to your operators, followed by a written report. Your new boiler level and control systems will be verified for Code compliance.

We'll Teach the Code to your O&M People

Understanding Section I (PG - 60) of the ASME Boiler Code is critical to the operation and maintenance of control instrumentation. We'll train your crew in the "why's" and "how's" of accepted standard practice.

Hands-On Training

Our expert will guide your people through each Reliance device: operation, maintenance, and proper scheduling.

Program Benefits

- Greatly reduced start-up issues
- Increased safety for plant and personnel
- Less frequent and more predictable maintenance
- Maximum equipment life

Instrumentation & Controls

JERGUSON®



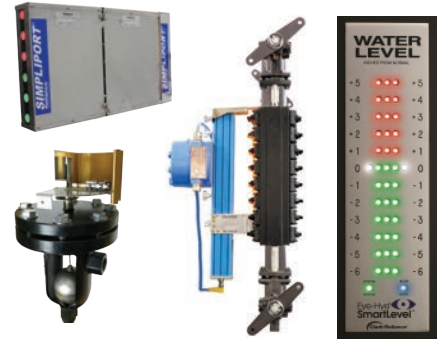
- Level Gages & Valves
- Magnetic Level Indicators
- Switches & Transmitters

JACOBY·TARBOX®



- Sight Flow Indicators
- Sight Windows
- Eductors & Tank Agitators

Reliance®



- Boiler Level Gages
- Remote Level Indicators
- Boiler Safety Instruments

Purity Products

ANDERSON® Separator

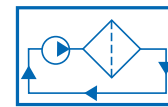


- Gas Coalescing & Filtration
- Steam Separation & Traps
- Complete Vessels & Internals

Enervac™ INTERNATIONAL ULC



- Transformer Oil Purification
- SF6 Purification Equipment
- Oil Regeneration Equipment



OIL FILTRATION SYSTEMS

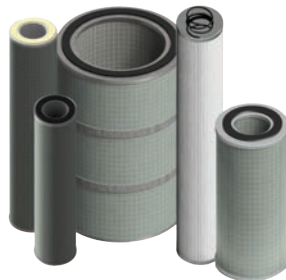


- Vacuum Dehydrators
- Varnish Removal Systems
- High & Low Flow Filter Skids

Elements & Internals

Clark·Reliance FILTER ELEMENTS®

Absolute Rated Elements for contaminant removal from liquids, steam, and gasses. Elements for critical use applications.



Parts & More



Clark·Reliance®

Authorised Distributor:

AMPMECH

46, Jalan SS 22/21, Damansara Jaya,
47400 Petaling Jaya,
Selangor Darul Ehsan, Malaysia.
Email: ampmech@ampmech.com
Website: www.ampmech.com