



ROSEMOUNT™ 1208 LEVEL AND FLOW TRANSMITTER AND ROSEMOUNT 3490 CONTROLLER

For level and volume flow measurement in water, wastewater and process utility applications

Water is an essential natural resource, and it needs to be managed effectively to ensure its quality and also achieve sustainable operations. The complete solution for water and wastewater, which consists of the Rosemount™ 1208 Level and Flow Transmitter and the Rosemount 3490 will help you enhance sustainability and improve efficiency at your plant.

Ensure sustainable operations

- Optimize resource usage and reduce water loss with reliable level and control functionality, which allow you to monitor your processes accurately
- Comply with regulations and legal requirements: Get detailed data and insights for your reports with data logging
- Reduce environmental footprint by replacing cable or sensors separately, thanks to the M12 connector technology

Improve efficiency in water processes

- Lower operational costs with maintenance-free radar technology that is submersible and unaffected by environmental and process conditions
- Eliminate manual rounds and reduce costs of operation with effective water management
- Optimize your processes with radar technology that has no dead zone, making it possible to increase dam or vessel utilization while preventing overfills

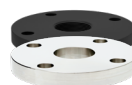
Reduce complexity with easy-to-use instrumentation

- Easy to install even with limited space or in outdoor environments thanks to the compact and weatherproof design of the devices
- Reduce complexity and save time thanks to the easy 4-step commission and easy-to-navigate structure
- Ease of configuration with intuitive controller application wizards or optional **Bluetooth®** wireless technology



Mounting Brackets

The Rosemount 1208 can be installed in any application with a mounting bracket, which is available in a short and extendable version



Wide Range of Adapters and Flanges

The Rosemount 1208 Series have 1.5" G and NPT process connections, which are compatible with a range of Rosemount flanges and adapters



Mounting and Weather Protection Kits

The Rosemount 3490 can be installed on pipes or walls with a versatile mounting kit, and the weather protection cover can help increase screen visibility and give an extra layer of protection in harsh environments



LEVEL AND FLOW MEASUREMENT IN WATER AND WASTEWATER

Rosemount 1208 Level and Flow Transmitter



- Small and lightweight robust PVDF design
- 80 GHz FMCW Fast Sweep Technology
- Plug-and-play installation
- Fully submersible

Communication Protocol	Optional Bluetooth® wireless technology, 2-wire 4-20 mA HART®, or 3-wire 4-20 mA, IO-Link, Switch
Measurement Range	49 ft. (15m)
Accuracy	± 0,08 in. (± 2 mm)
Operating Temperature	-40 to 176°F (-40 to 80°C)
Operating Pressure	-14 to 43 psi (-1 to 3 bar)
Process Wetted Material	PVDF
Enclosure Rating	IP66/68; TYPE 4X/6P
Approvals	Class I Div 2 (Zone 2), NSF 61, WRAS, FDA, EC 1935/2004

Rosemount 3490 Controller



- Robust encapsulated design
- Full suite of capabilities with pump control, totalization, logging, and flow geometries
- Intuitive user interface and easy-to-navigate menu
- Digital connectivity with Ethernet

Configuration Wizards	<ul style="list-style-type: none"> • Level and Pump Control • Open Channel Flow Measurement • Differential Level Measurement • Tank Volume Calculations
Input Compatibility	4-20 mA HART
Power Supply	100-240 VAC
Ambient Temperature	-40 to 140°F (-40 to 60°C)
Enclosure Rating	IP66/67; TYPE 4X
Host Communication	Ethernet (http, Modbus TCP/IP)

Learn how to use the Rosemount 1208 and Rosemount 3490 in a few minutes



For more information, visit [Emerson.com](https://www.emerson.com)

The Emerson logo is a trademark and service mark of Emerson Electric Co.
 Brand logotype are registered trademarks of one of the Emerson family of companies.
 All other marks are the property of their respective owners. ©2024 Emerson Electric Co. All rights reserved.

00807-0200-7062 Rev AB

Authorised Distributor:

AMPMECH
 46, Jalan SS 22/21, Damansara Jaya,
 47400 Petaling Jaya,
 Selangor Darul Ehsan, Malaysia.
 Email: ampmech@ampmech.com
 Website: www.ampmech.com

ROSEMOUNT™

EMERSON™