



Mounting plate + terminals C31



Type C31 A



Mounting plate+ terminals C30



Type C30

Technical data

Type C30 | Type C31

Marking accd. to 2014/34/EU	⊕ II 2 G Ex d IIC T6 / ⊕ II 2 D Ex tD A21 IP67 T85 °C
EC-Type Examination Certificate	KEMA 09 ATEX 0110X
IECEX Certificate of Conformity	IECEX BK1 07.0026
Marking accd. to IECEx	Ex d IIC T6 Ex tD A21 IP67 T85 °C
Permissible ambient temperature	-20 °C to +55 °C
Rated voltage	690 V
Rated current (max.)	C30: 40 A / C31: 61 A
Protection class	I
Degree of protection accd. to EN 60529	IP67
Enclosure material	light alloy
Enclosure colour	natural finish

Type C30

Connecting terminals	up to 6 mm ²
Weight	approx. 0.8 kg (empty)
Max. number of drillings/cable glands	4
Terminal mounting space on the terminal rail	45 mm

Type C31

Connecting terminals	up to 10 mm ²
Weight	approx. 1.3 kg (empty)
Max. number of drillings/cable glands	8
Terminal mounting space on the terminal rail	82 mm

C30 / C31 Ex-d terminal box



Type C30



Mounting plate + terminals C30



Type C31



Mounting plate + terminals C31

Ordering details

Type	Thread entries	Weight	Order No.
Type C30			
C30 T1-M	3 x M20	0.8 kg	NOR 000 001 151 581
C30 X1-M	4 x M20	0.8 kg	NOR 000 001 151 506
C30 T3-M	3 x M25	0.8 kg	NOR 000 001 151 599
C30 X2-M	4 x M25	0.8 kg	NOR 000 001 151 514
C30 T1	3 x 1/2"	0.8 kg	NOR 000 001 151 181
C30 T2	3 x 3/4"	0.8 kg	NOR 000 001 151 199
C30 X1	4 x 1/2"	0.8 kg	NOR 000 001 151 206
C30 X2	4 x 3/4"	0.8 kg	NOR 000 001 151 214

Type C31			
C31 T1-M	3 x M20	1.30 kg	NOR 000 111 150 501
C31 T2-M	3 x M25	1.30 kg	NOR 000 111 150 502
C31 X1-M	4 x M20	1.30 kg	NOR 000 111 150 504
C31 X2-M	4 x M25	1.30 kg	NOR 000 111 150 505
C31 T1	3 x 1/2"	1.30 kg	NOR 000 111 150 001
C31 T2	3 x 3/4"	1.30 kg	NOR 000 111 150 002
C31 T3	3 x 1"	1.30 kg	NOR 000 111 150 003
C31 X1	4 x 1/2"	1.30 kg	NOR 000 111 150 004
C31 X2	4 x 3/4"	1.30 kg	NOR 000 111 150 005
C31 X3	4 x 1"	1.30 kg	NOR 000 111 150 006
C31A T2	3 x 3/4"	1.30 kg	NOR 000 111 150 013
C31A X1	4 x 1/2"	1.30 kg	NOR 000 111 150 011

Accessories

Type	Version	No. of terminals	Order No.
Build-in components type C30			
BC 30	Mounting plate with pillar terminals 4 x 4 mm ²	4 x Ex-e ²⁾	NOR 000 001 151 222
PBPD 30	Terminal rail DIN 46877	Mounting rail	NOR 000 000 115 314
PC 30	Mounting plate without terminals	–	NOR 000 000 115 302

Type	Order No.
Mounting bracket for housing fixing type C30	
SUSC 30	NOR 000 000 115 311

Type	Version	No. of terminals	Order No.
Build-in components type C31			
BC31	Mounting plate with pillar terminals	4 x 4 mm ² 2)	NOR 000 111 150 009
P C31	Mounting plate without terminals	–	NOR 000 000 115 306
PBPD 31	Terminal rail DIN 46877	–	NOR 000 000 115 315

¹⁾ Other threads on request

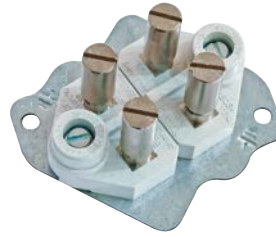
²⁾ 4 x 4 mm² multi-wire or 2 x 6 mm² solid-wire



Mounting plate + terminals C31



Type C31A

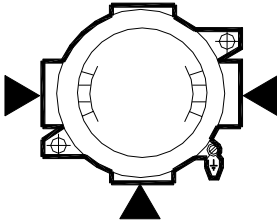


Mounting plate + terminals C30

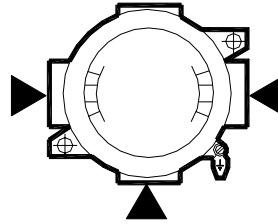


Type C30

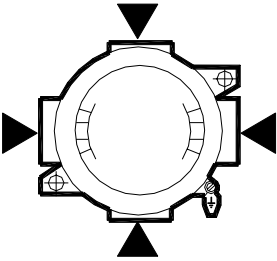
Dimension drawing



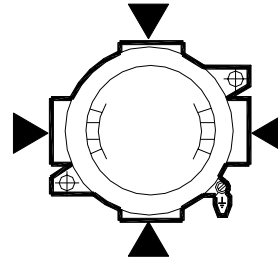
Type C30 T



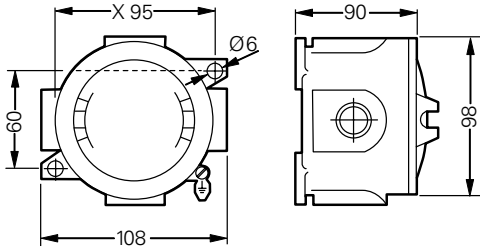
Type C31 T



Type C30 X

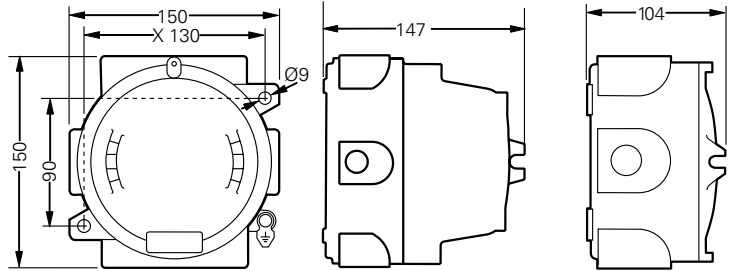


Type C31 X



Typ C30

X = fixing dimensions, ▲ = Thread



Typ C31A

Typ C31

Authorised Distributor:



46, Jalan SS 22/21, Damansara Jaya,
47400 Petaling Jaya,
Selangor Darul Ehsan, Malaysia.
Email: ampmech@ampmech.com
Website: www.ampmech.com